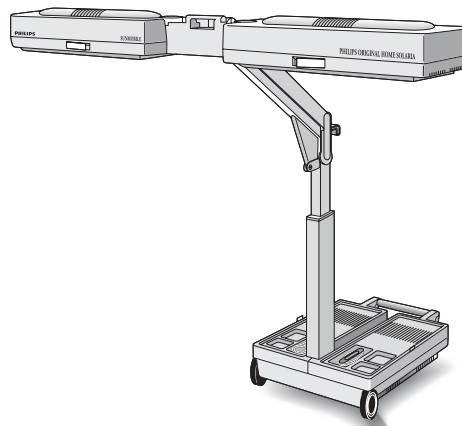


Service
Service
Service

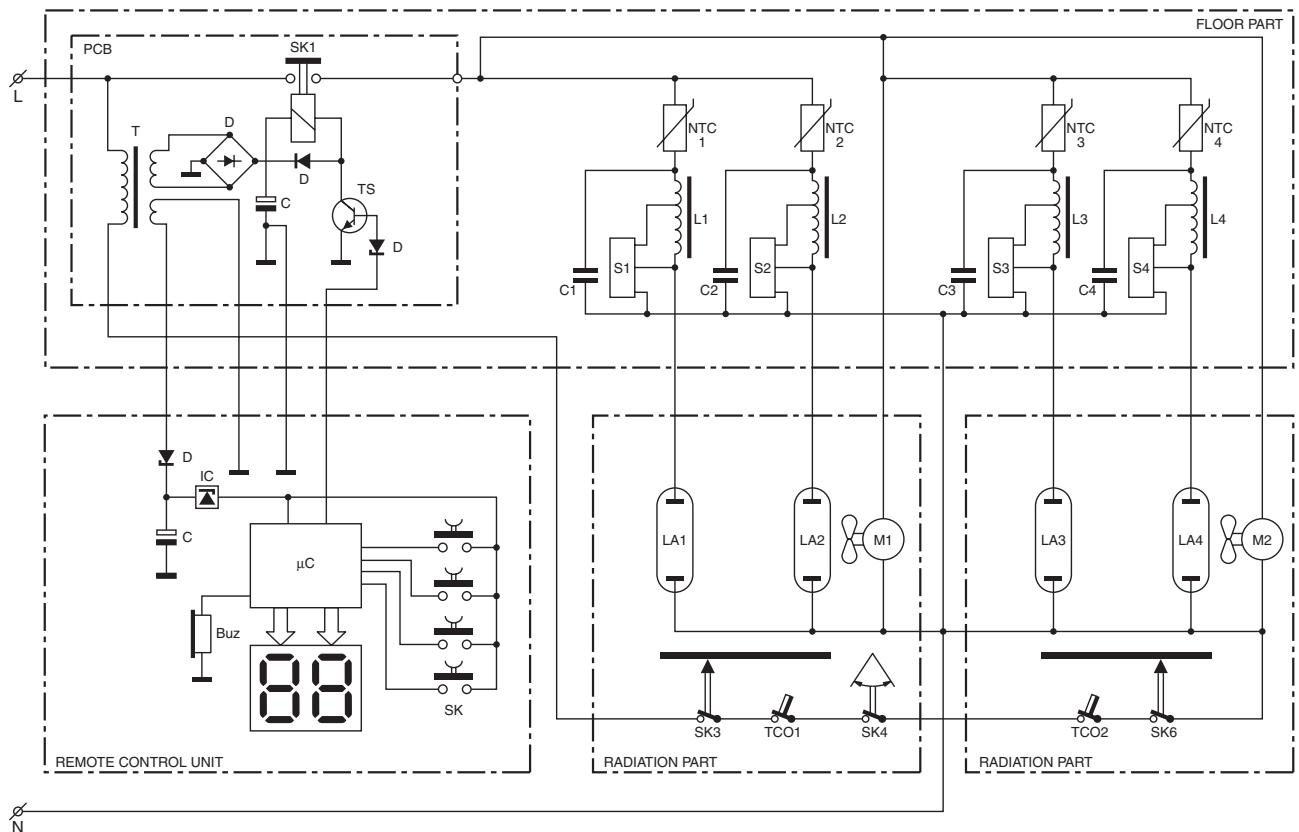


Philips Domestic Appliances and Personal Care

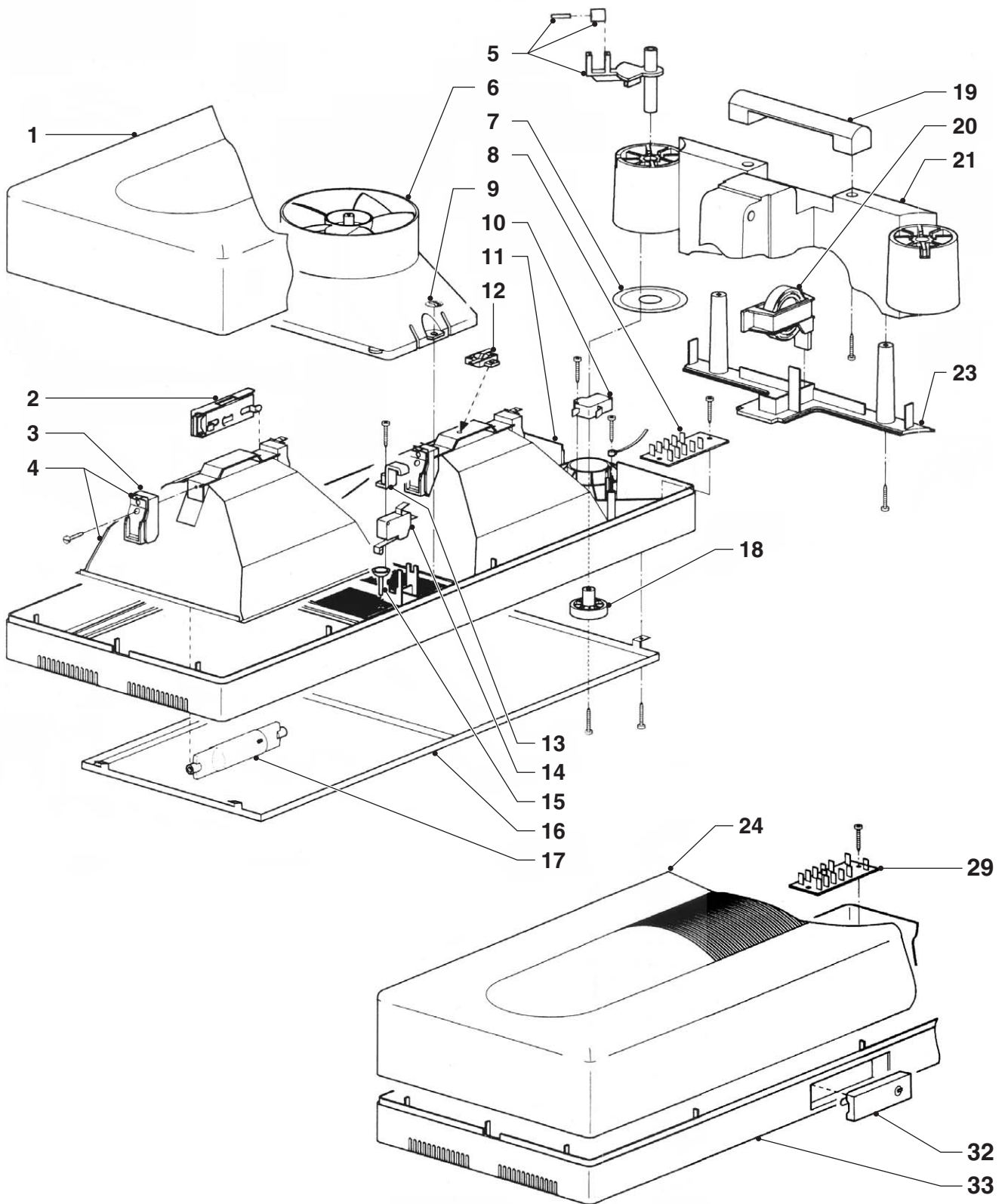
Service Manual

TECHNICAL DATA:

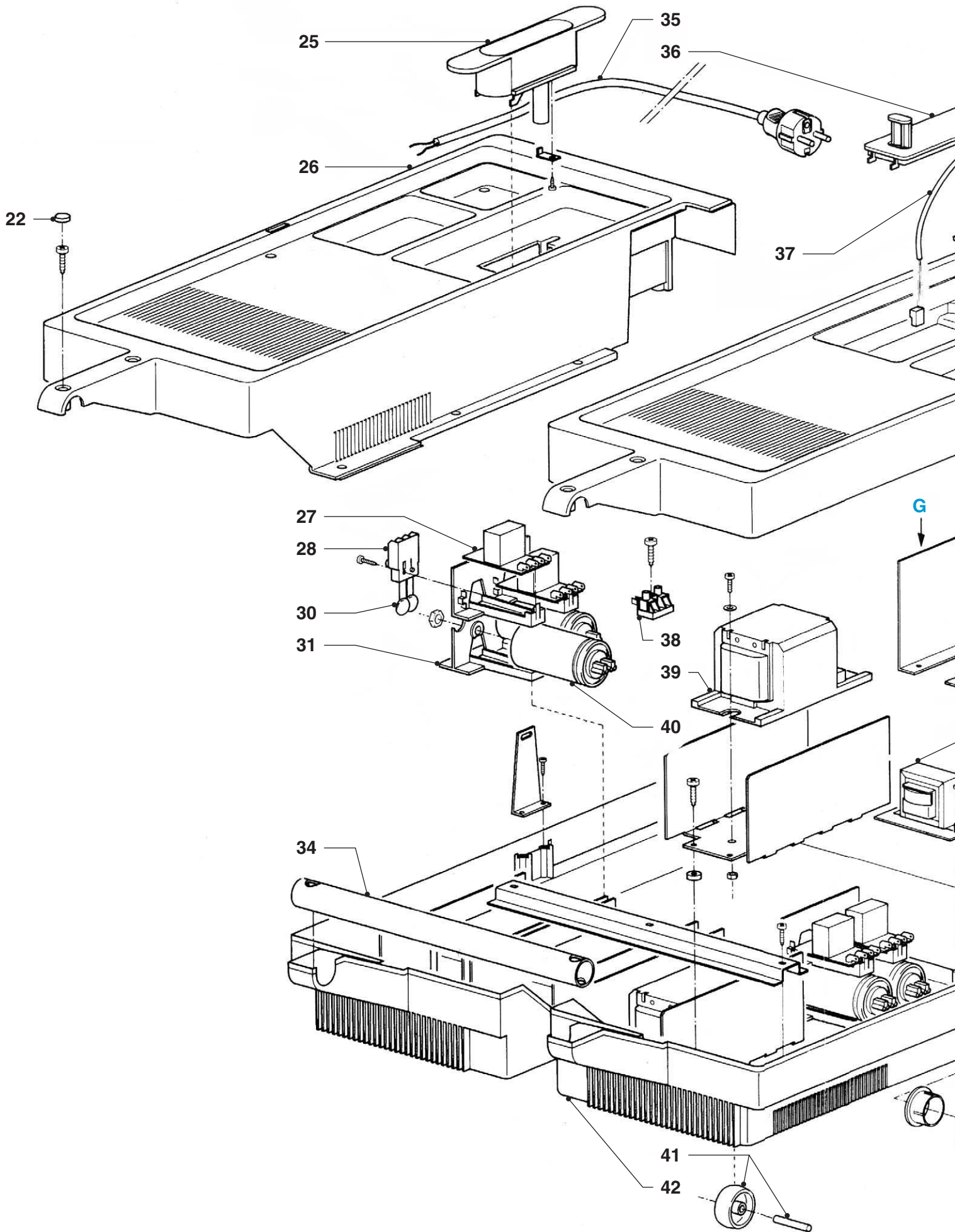
Input Voltage	: 230 V / 50 Hz	Starter	: 4x SN58-spec.
Input consumption	: approx. 1800 W	Timer	: Digital 29 min.
UV-A source	: 4x HPA flexpower 400-600	Radiation area	: 190 x 75 cm
Ballast	: 4x BHA400L	Output (min) UVX-36 meter	: 3.9 mW/cm ² at 70 cm

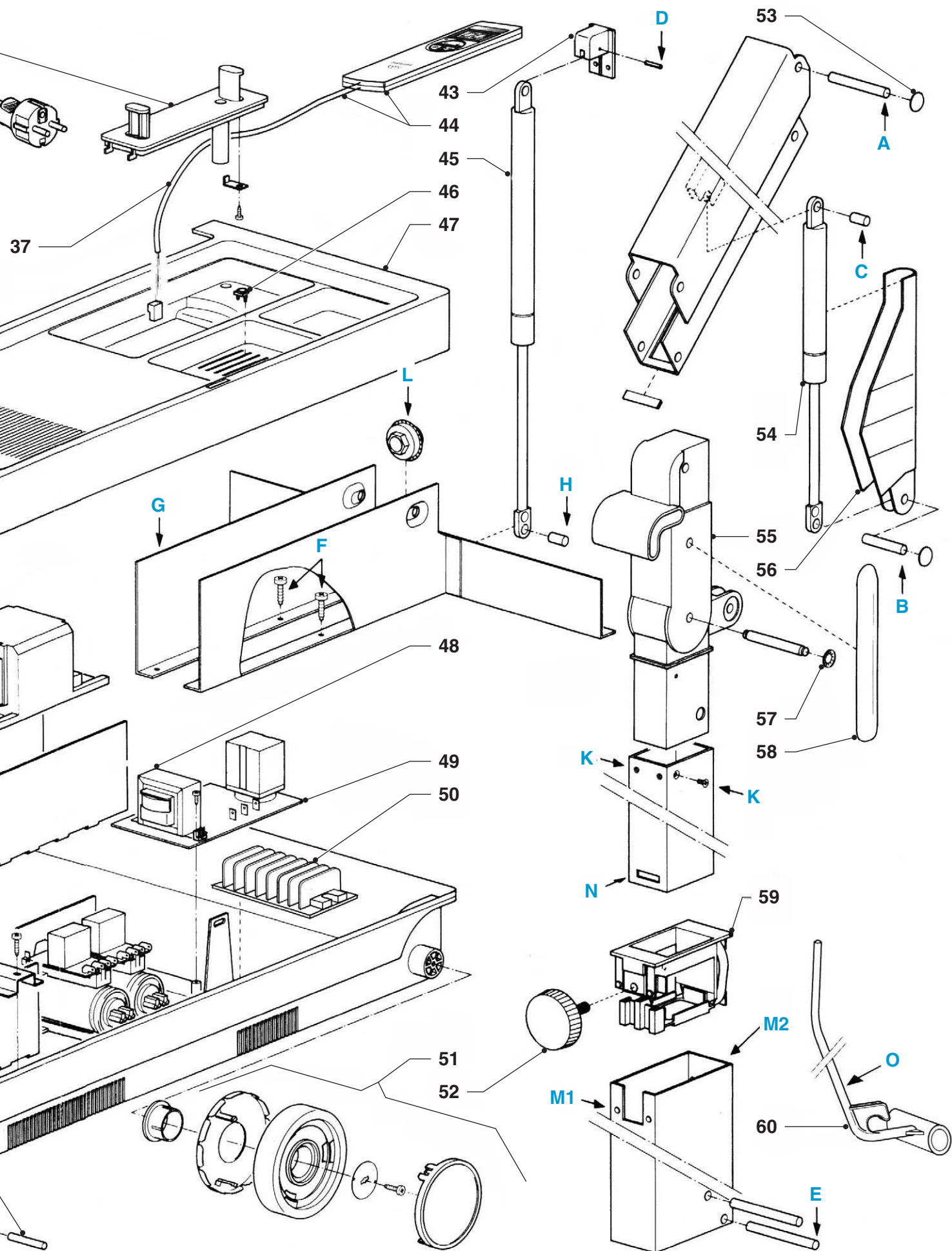


HB 846/A



HB 846/A





HB 846/A

Item	Service code	Description	Item	Service code	Description
1	4222 062 95470	Cover radiation part	40	4822 124 40701	Capacitor 25 µF / 250 V
2	4822 417 30163	Lock left	41	4822 528 70519	Wheel + spindle
3	4822 325 20102	Lamp holder	42	4822 441 12209	Housing floor part
4	4822 380 20306	Reflector	43	4822 404 40654	Holder
5	4822 417 11009	Stop disc + roller	44	4222 062 95480	Remote control
6	4822 361 11186	Fan complete	45	4822 529 10255	Gas spring base
7	4822 532 40186	Retaining ring	46	4822 410 11892	Memo knob
8	4822 265 41388	PCB connector	47	4822 442 01455	Cover RC-side
9	4822 532 10744	Speed clamp 3.6 mm	48	4822 146 20823	Transformer
10	4822 271 30619	Micro switch	49	4822 218 11844	PCB complete 230 V
11	4822 441 12212	Lamphousing flex-side	50	4822 265 20655	Connecting block 7S
12	4822 282 40255	Aut. cut-out	51	4822 528 11272	Wheel complete
13	4822 404 40639	Switch bracket	52	4822 410 11893	Ornamental screw
14	See item 10		53	4822 462 11098	Cap spring fix
15	4822 410 40417	Switch pin	54	4222 062 94680	Gas spring (hinge)
16	4822 466 61869	Glass plate white	55	4822 498 10707	Grip part complete
	4822 466 62476	Glass plate brown	56	4822 442 01457	Cover gas spring
17	4822 134 30032	HPA flex power 400-600	57	4822 530 70444	Spring fix 85X26
18	4822 411 90032	Hinge cap	58	4822 442 01453	Hinge cover
19	4822 498 10706	Grip	59	4822 417 50288	Lift mechanism
20	4222 062 95020	Distance indicator	60	4822 404 40725	Guide pin
21	4822 441 12213	T-piece	--	4822 690 80123	HB 071 protecting goggles
22	4822 462 11099	Orn. prop (set)	--	4822 395 50446	Set of keys
23	4822 442 01454	Cover T-piece	--	4822 310 31791	Damping material
24	See item 1		--	4822 321 11413	Coiled flex 7C
25	4822 442 01448	Flex holder (mains)			
26	4822 442 01452	Cover flex side			
27	4822 219 80605	Starter SN58-spec			
28	4222 062 94570	Connecting block			
29	See item 8				
30	4222 062 94580	NTC resistor			
31	4822 404 40554	Holder			
32	4822 417 30164	Lock right			
33	4822 441 12211	Lamphousing RC-side			
34	4822 535 10561	Bar grip			
35	4822 321 11395	Flex EU			
36	4822 256 10495	Flex holder (timer)			
37	4822 320 12291	Remote control cable			
38	4822 265 20234	Connecting block 2S			
39	4222 062 94330	Ballast 230 V			

HINTS FOR REPAIRS

When checking/replacing HPA-lamps you should pay attention to the following:

- HPA lamps only start when they have cooled down sufficiently.
- Never touch a lamp with your fingers. If necessary, clean the lamp with a cloth soaked with alcohol.
- After assembly the glass filter should be free from finger prints and dust. Clean the glass filter with a cloth soaked with alcohol, if necessary.
- New HPA lamps may show colour differences. This is not a defect, but a characteristic phenomenon of lamps of this type. The discolourations disappear after a short period of use.
- Always use protecting goggles when looking in the direction of burning lamps.

If the thermal switch turns a UVA lamp off repeatedly, check if the rpm of the fan isn't too low. Put some thin oil on the bearings.

If a fuse blows when you switch on the appliance, this is usually caused by a fuse that acts too quickly. In such a case, use of a slow 16 A safety fuse is recommended on account of the high starting current.

The fuse may also be activated as a result of a defective NTC resistor, a defective capacitor, a defective ballast or an overloaded circuit.



Used-up or broken lamps are chemical waste and must be disposed of in the appropriate manner.

Gas spring (item 45)

- Put the appliance in the operating position.
- Remove the covers (item 26 and 47) after loosening 22 screws.
- Remove clamping pin (D) and press the gas spring out of the holder (item 43).
- Remove the blocking pin (E), and lower the radiation unit onto the floor.
- Remove the 2 screws (F).
- Lift the metal subframe (G) a little and remove the gas spring (item 45) by means of pin (H).

Gas spring (item 54)

- Put the appliance in position 2, as indicated on the stand.
 - Hinge the radiation units outwards and remove a decorative clamp (item 53).
 - Place a hand on the text part of the stand and press this part into horizontal position.
 - Use a plastic hammer to tap pin (A) outwards.
- NB: CONTINUE TO EXERT PRESSURE ON THE STAND!

- Hinge the radiation units inwards again and raise the stand slowly - moving the radiation unit along by means of the handle (item 19).
- Now turn the stand and the radiation unit through so far that the radiation units rests on the floor.
- The gas spring (item 54) is now unloaded so that pin (B) can be easily removed.
- Place the new gas spring with pin (C) in the hinged part. The pin is placed under the 7-core connection cable.
- Assemble the protecting cover (item 56) and press pin (B) back into place again.
- Lift the radiation unit by its handle and check whether the gas spring with pin (C) is correctly supported in the fork of the hinged part.
- Press the hinged part against the spring pressure, moving the radiation unit align at the same time until the whole unit is in horizontal position again.
- Continue to exert pressure and hinge the radiation unit outwards.
- Assemble pin (A).
- Put the appliance in operating position, and assemble the remaining clamps.

Lift unit (item 59)

- Remove the covers (item 26 and 47).
- Disconnect the wires of the 7-core cable (write down the colours of the connecting wires).
- Wrap the connectors with tape for easily handling.
- Press the cord relief (L) inwards after having pressed the locking device.
- Remove the blocking pin (E) and take the guide bar (O) out.
- Press the entire cord into the stand.
- Put the appliance in operating position.
- Remove the 2 screws (K) and lift the radiation unit out of the tube of the stand.
- Remove the clamping screw (item 52).
- Remove the 2 screws (M1).
- Remove the lift unit (item 59) together with the inside tube while pressing the detent (M2).
- Press the locking pegs at place (N) inwards and slide the lift unit of the inside tube.
- Assemble a new lift unit (pay attention to the correct placing of the inside tube on account of the fixing screws (K)).
- Check whether the pressure plate and the screw block are present on the one side of the lift unit and the spring retaining plate on the other side.
- Assemble the radiation unit on the inside tube and tighten screws (K).
- Assemble the 7-core cable and fit the guide bar (O).
- Check if the guide bar is inside the curled cable!
- Assemble the blocking pin (E).
- Assemble the covers (item 26 and 47).

HB 846/A

